

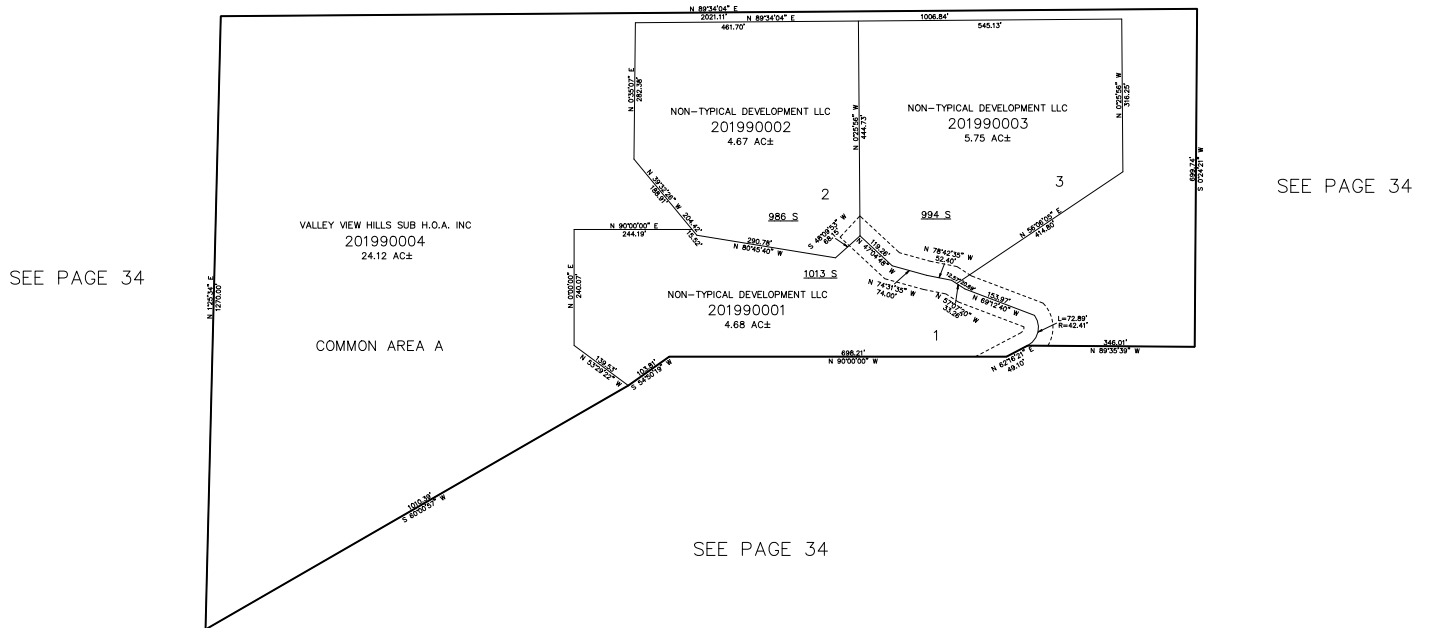
PART OF THE E.1/2, OF SECTION 22, T.6N., R.1E., S.L.B. & M.  
**VALLEY VIEW HILLS SUBDIVISION PH 1**

199

IN WEBER COUNTY  
 SCALE 1" = 200'

TAXING UNIT: 520

SEE PAGE 16



10' UTILITY & DRAINAGE EASEMENTS EACH  
 SIDE OF PROPERTY LINES AS INDICATED  
 BY DASHED LINES EXCEPT AS OTHERWISE  
 SHOWN.

FOR COMPLETE SURVEY DATA SEE  
 ORIGINAL DEDICATION PLAT IN  
 BOOK 98, PAGE 68 & 69 OF RECORDS.